

# OPERATION, MAINTENANCE AND SPARE PARTS MANUAL

---

## FOREST TRAILER FARMI 100



**READ THIS OPERATION AND MAINTENANCE MANUAL CAREFULLY  
BEFORE USING THE MACHINE**

---

**FARMI**<sup>®</sup>  
FOREST

Farmi Forest Corporation  
Ahmolantie 6  
FIN-74510 Iisalmi, Finland  
Tel. +358 (0)17 83 241  
Fax. +358 (0)17 8324 372  
[www.farmiforest.fi](http://www.farmiforest.fi)

# FARMI 100

---

## WARNING SYMBOLS IN THIS MANUAL



- imminent danger which could cause serious personal injury or death



- danger which could cause personal injury



- conditions or misuse that could damage equipment or machinery

### NOTE!

- reminders, such as for performing checks or carrying out maintenance or repair procedures

## INTRODUCTION

This manual includes the information and maintenance instructions required for operating the machine in the optimal manner.

Although you have experience in using this kind of machinery, read the operation and maintenance instructions carefully since they include information enabling efficient and safe operation. Regular maintenance is the best way to guarantee the efficient and economical performance of the machine.



**Each and every operator must read, understand, and follow all safety instructions and procedures.**

## CUSTOMER FEEDBACK

We are happy to receive your opinions and suggestions for improvements by mail, fax or e-mail. All implemented suggestions for improvements will be rewarded.



## EC DECLARATION OF CONFORMITY

**Manufacturer:**

Farmi Forest Corporation  
Ahmolantie 6, FIN-74510 IISALMI, Finland

**Person authorized to compile the technical documentation:**

Name: Heikki Sirviö  
Address: Ahmolantie 6, FIN-74510 IISALMI, Finland

**Commercial name:**

Farmi

---

**Machine denomination:**

Forest trailer

---

**Machine type:**

FARMI 100

---

**Machine series number:**

---

Herewith, we declare that the machine brought into circulation conforms with the pertinent requirements of the Machinery Directive 2006/42/EC.

The following harmonized standards have been applied for the conceptual design of the machine:

SFS EN ISO 12100, SFS-EN ISO 4254-1

---

Iisalmi  
(Place)

---

4.11.2011  
(date)

---

Juha Hallivuori

---

# FARMI 100

---

## PRODUCT WARRANTY

Farmi provides a 12-months warranty on all Farmi products.

Register on our home page ([www.farmiforest.fi](http://www.farmiforest.fi)) under FeedBack ("Product Registration" form) within 30 days after the receipt of the product to get full product warranty and additional information on your product. If it is not possible for you to register via internet, please register as follows: Complete the registration form on the last pages of this manual and return it to us within 30 days after the receipt of the product.

# FARMI 100

---

## TABLE OF CONTENTS

PRODUCT WARRANTY	4
GENERAL SAFETY INSTRUCTIONS	6
MAIN PARTS	10
STICKERS AND SIGNS	10
TECHNICAL DATA	11
ASSEMBLY	12
INSTRUCTIONS FOR USE	12
PRE-OPERATION CHECKS	12
DRIVING	12
MOUNTING, DISMOUNTING AND PARKING OF TRAILER/CRANE COMBINATION	13
HYDRAULIC STEERING	14
LUBRICATION INSTRUCTIONS	15
TROUBLESHOOTING TABLE	15
MAINTENANCE	16
FARMI 100	20
FARMI 100	22
HOSE ASSY, TWO HUBS WITH BRAKES	24
HOSE ASSY, ONE HUB WITH BRAKES	24
HYDRAULIC STEERING	25
6-BOLTS HUB WITH BRAKES	26
6-BOLTS HUB WITHOUT BRAKES	27
PRODUCT REGISTRATION FORM	30

When ordering spare parts, please indicate machines type from the machine plate, spare parts order number, description and quantity required. Example. FARMI 100, 54819200, draw bar eye, fixed, 1 pc

# FARMI 100

## GENERAL SAFETY INSTRUCTIONS

These safety instructions are meant for the owners of FARMI equipment, as well as those who operate, service or repair it.

The instructions help with:

- using the machine safely, appropriately and effectively.
- identifying, avoiding and preventing potentially dangerous situations.

The manufacturer supplies an instruction manual, which must always be available at the place of operation of the machine. Each user must read the safety, maintenance and operating instructions before operating the machine, and comply with these instructions at all times.



**Ensure that every operator of the machine is familiar with the content of the instruction manual and situation-specific safety instructions, and has been suitably trained before operating the machine.**

The machine complies with technical requirements and applicable safety regulations. However, incorrect use, maintenance or repair of the machine may cause risks.

In addition to the instruction manual, remember to comply with regulations of the local occupational health and safety authorities, and with your country's laws and decrees.

**The manufacturer is not liable for damages caused by:**

- incorrect, negligent or inappropriate use of the product.
- non-original spare parts.
- normal wear and tear.
- misuse caused by an untrained person's improper actions.
- alterations made without the manufacturer's permission.



**Written authorization must be requested from the manufacturer for any alterations to the machine.**

## STARTING

- Familiarize yourself thoroughly with the use, operation and controls of the machine and its equipment before starting.
- Familiarize yourself with the capacities and limitations of the machine and its equipment.
- Do not use the machine unless you are completely familiar with its operation.
- Be aware of the machine's danger zones.
- During operation, prevent bystanders from entering the danger zone.
- Ensure that each operator has the necessary safety equipment, such as a helmet, safety goggles, work safety boots and suitable protective clothing.
- Never wear loose clothing around moving parts. Protect long hair!
- Ensure that work is carried out according to the stipulations of applicable occupational health and safety legislation.
- Before starting up or using the machine, ensure that it cannot cause a risk to other people or property.
- Perform a safety check on the machine before every use. If you observe any faults or deficiencies, repair the machine immediately.
- Before operating the machine, ensure that there are no foreign articles in it.
- Place the machine on a hard, level surface for operation. In the winter avoid working in slippery areas.
- Before mounting and using the machine, check the PTO drive shaft for correct condition and attachment.
- Never use a faulty or deficient machine.

# FARMI 100

## TRANSPORT

- Before driving with the machine, ensure the safe mounting of the machine. Make sure that the journals are seating correctly and that the pins are tight. Check the tension of the lower link stabilizers.
- Before driving with the machine, make sure that the required lamps and reflectors as well as the slow moving vehicle sign are attached correctly. Moreover, the lamps should be checked for correct functioning.
- Before driving with the attached machine, make sure that the hydraulic unit of the machine is depressurized (unless otherwise instructed in the operating instructions).
- When driving on public roads, always observe the valid traffic regulations. The travel speed must be adapted to the specific conditions.
- When driving, please take into consideration the additional mass resulting from the machine's weight. It may affect the reactions, the steerability and the braking function of the tractor.
- Please note that the machine rear sways when turning.
- Pay attention to the machine's height near bridges or other height restricting objects.
- When backing off, the machine may obstruct the rear view. Exercise extreme caution. If necessary, ask a flagman to help you; he can indicate the required distances.
- It is prohibited for other people to ride on the machine.

- Never insert any body part into the machine with the engine running.
- If any faults arise that may jeopardize occupational safety, turn off the machine.
- During operation, the machine's operator is responsible for safety in the whole work area. Work may not be carried out in the presence of any factors that jeopardize occupational safety.
- Exercise extreme caution when hitching / unhitching the machine from a tractor/trailer.



**The machine's operator must have constant, unobstructed visibility of the work area. If this is not possible, the operator must work with an assistant.**

## OPERATION



**Many occupational accidents take place in abnormal circumstances. Therefore it is important to take into account all the possible circumstances that may arise during operation of the machine.**

- Depending on the machine's type, it will have diverse safety devices and protectors. These are meant to protect the machine and its operator, and they must never be removed or altered. Never start up or use the machine without all the safety devices and protectors in place. Also check the universal joint's safety equipment and joints.
- Look out for moving parts when the machine is in operation.
- Secure the machine against unauthorized and accidental operation (e.g. moving when parked) whenever it is left unattended.
- Never leave the machine running unattended.
- Avoid causing fast, stroke-like loading.
- Never exceed the given operating values.
- All safety and warning signs on and in the machine must be legible and intact.
- The machine may not be operated by persons who are unwell or under the influence of drugs or alcohol.

## MAINTENANCE

- The machine may only be serviced and repaired by professionals.
- Electrical and hydraulic faults may only be repaired by authorized professionals.
- In cases requiring welding, contact the manufacturer.
- Turn off the tractor engine and disconnect the universal joint before beginning service or maintenance actions.
- Before any maintenance work, turn the main power switch of the tractor to OFF.
- Ensure that there is no pressure in the hydraulic system.
- Take out the key from the tractor's ignition for the duration of the servicing or maintenance. Check that the power is off from the machine you are working on.

- When servicing the machine, place it on a level surface and ensure that it cannot be moved.
- Observe the service intervals and annual safety inspections.
- All spare parts and equipment must fulfill the manufacturer's requirements. This can be guaranteed by using original parts.
- Put all safety devices back into place immediately once servicing or maintenance is complete.



**When lifting the machine, check that the lifting/hoisting equipment is in perfect working order. Check the weight of the machine before lifting it. Choose lifting trajectories so that they do not cause any danger.**

Many countries have specific legislation on lifting, hoisting cables and hoists. Always comply with local safety regulations.

## OILS AND LUBRICATION

- Always use the oil types recommended by the manufacturer. Other types of oil may cause faults or improper operation of the equipment, which could lead to serious damage to people or property.
- Never mix different liquids or oils.
- Always follow the manufacturer's lubrication instructions.
- Use control equipment carefully until the hydraulic oil has had time to reach its operating temperature.



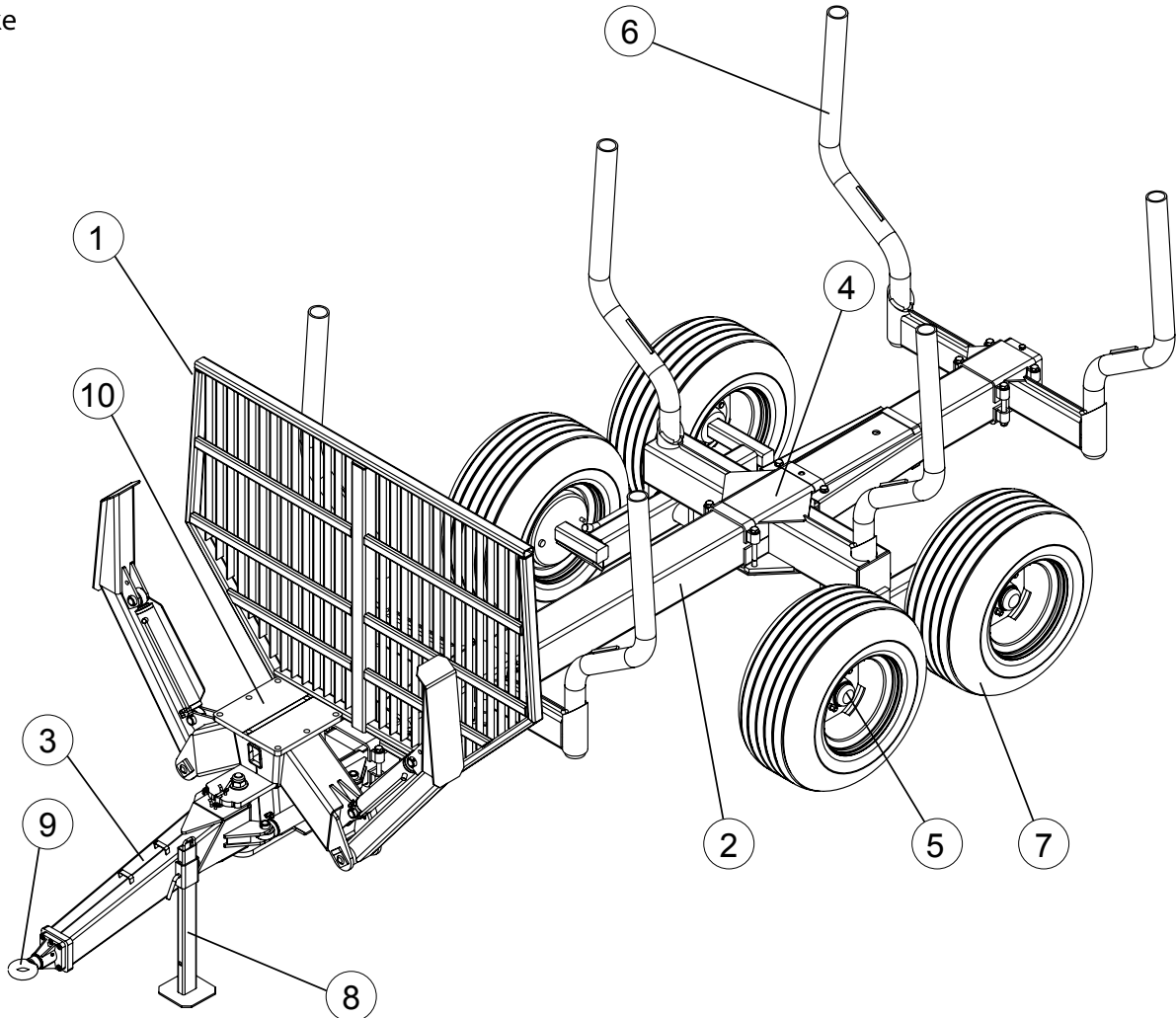
## SAFETY INSTRUCTIONS FOR HYDRAULIC CIRCUITS

1. Work on hydraulic equipment may only be carried out by professional hydraulic engineers.
2. Be cautious when using the equipment in cold conditions.
3. Check the machine for leaks. Do not use the machine if there is a leak from any system. Check all hydraulic hoses – particularly those which are bent during use – and replace any that are in poor condition or have leaks. Ensure that all joints are tight and that the lines are not damaged. Check that all protective caps and filler caps are closed properly. Check the hose sheathing for damage.
4. Check that all hose connectors, lengths and qualities comply with applicable requirements. When replacing or repairing hoses, use original parts or hoses and connectors recommended by the manufacturer. Check particularly that the pressure classes of the hoses and connectors are suitable to the operating pressure levels.
5. Check that all safety devices such as pressure relief valves, etc., are in place and work properly. Familiarize yourself with their use. Safety systems may never be bypassed.
6. Check the main hydraulic parts daily, and always after a fault. Replace any damaged parts immediately.
7. If a component is damaged, clean it before repairing it. Do not use solvents when cleaning parts.
8. Do not attempt to carry out repairs that you are not fully familiar with.
9. Never carry out repairs of the hydraulic circuit when the system is pressurized. When pressurized, the oil spray can penetrate the skin and cause mortal danger.
10. Never work below a device or component that is only being held up by hydraulics. Use separate supports when carrying out maintenance or repairs. Do not disconnect cylinders or their valves until the machine is well supported.
11. Most hydraulic oils do not evaporate easily. Risk factors include hot oil, spills and oil mist (pressurized).
12. If oil gets into your eyes, rinse with plenty of water and contact a doctor.
13. Avoid prolonged or repeated contact with your skin.
14. If sprays or contact with the skin cannot be avoided, use protective gloves, goggles and clothing as necessary. Do not use oily clothing.
15. Avoid discharging hydraulic oil into the environment, as it can pollute waterways and the groundwater. If biodegradable oil is to be used, please contact the manufacturer beforehand and have the suitability of your equipment for the operation with biodegradable oil confirmed by him before such oil is used.
16. Store the oil in sealed containers provided by the manufacturer. Try to transfer the oil directly from its container into the tank.
17. If the oil must be passed through other containers, ensure that they are completely clean. Caps, funnels, sieves and filling holes must also be clean.
18. Never store oil outdoors, as water could condense in it.
19. Always dispose of oil in a suitable container, never into the environment!

# FARMI 100

## MAIN PARTS

1. Screen
2. Central beam
3. Draw bar
4. Bogie
5. Hub
6. Stake
7. Tyre
8. Support leg
9. Draw bar eye
10. Mounting plate for crane

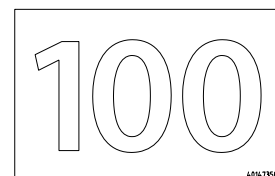


## STICKERS AND SIGNS

These stickers and plates must be found on the machine. Replace missing stickers or plates immediately..

<b>Farmi Forest Corporation</b>		<b>CE</b>
Ahmolantie 6 FIN-74510 IISALMI FINLAND		
TYPE	FOREST TRAILER	
MODEL	FARMI 100	40146740
SERIAL NO.		
YEAR OF MANUFACTURE	20	
OWN WEIGHT	1680-1750 kg	
MAX. TOTAL WEIGHT	11700 kg	

1. Machine plate FARMI 100 (40146740)



3. 100-sticker (40147350)

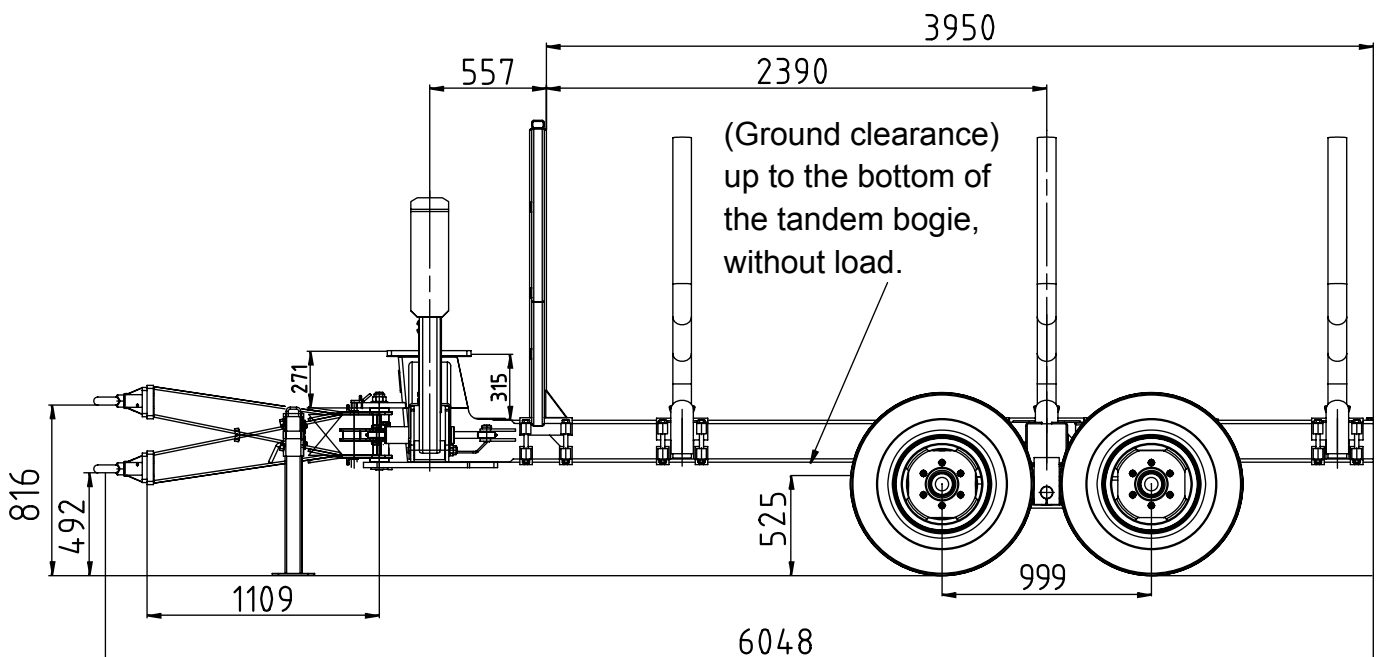
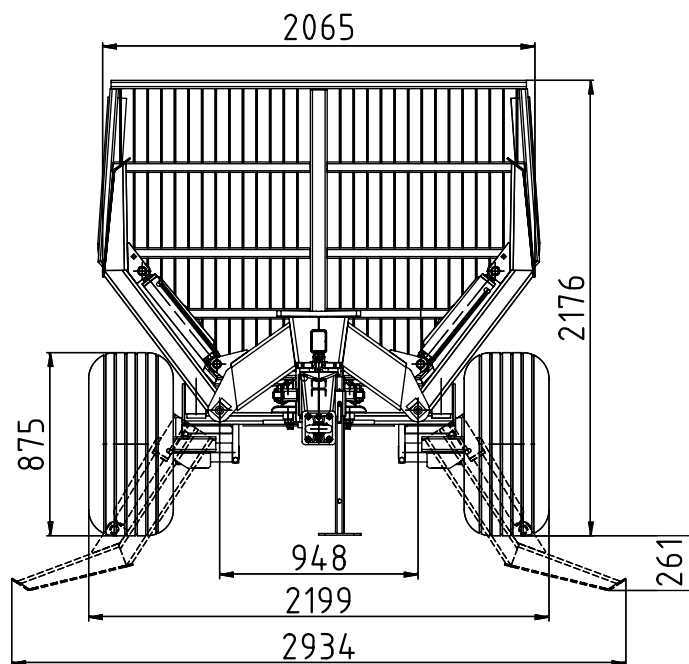


4. FARMI-sticker (40146900)

# FARMI 100

TECHNICAL DATA	FARMI 100
Loading capacity kg	10 000
Own weight with support legs kg	1680-1750
Loading area m <sup>2</sup>	2,3
Ground clearance mm	550
Hydraulic steering	with 2 cylinders
Tyres	400/60-15,5 14PR offset-15
Recommended cranes	FARMI 4581 FARMI 4670

## DIMENSIONS



# FARMI 100

## ASSEMBLY

### SAFETY



Read the assembly instructions before installing the trailer. Careless assembly and non-compliance with instructions may cause hazards to users and damages to the machine.

The warranty is void for machines or components which have been damaged due to non-compliance with approved assembly and installation instructions.

Before beginning the assembly work, ensure that there is no pressure in the hydraulic system.

Never connect or disconnect pressure hoses or components when the hydraulic system is pressurized.

## INSTRUCTIONS FOR USE

### SAFETY



Read the Instructions for use before using the tractor / trailer combination. Non-compliance with instructions can cause machine breakage or user injury.

Before starting the machine, ensure that it is in working order. Check for any wear and tear or damage. Repair any damages that affect the machine's operation immediately.

Never use the trailer for other purposes than those for which it is designed.

### PRE-OPERATION CHECKS

- Check the oil level in the vehicle hydraulic system.
- Ensure that the trailer is correctly coupled to the vehicle, that the hoses and the hydraulic components are correctly mounted and are functioning.
- Before driving make sure the brakes are disengaged.
- Check the tyre pressures. If needed, increase or decrease tyre pressure. Don't exceed recommended tyre pressures.

### DRIVING

- Braking heavily will wear or even damage the brakes. Apply the brake steadily.
- If you use a hydraulic steering, do not suddenly overload the control cylinders.
- Be careful not to turn over the vehicle or the forest trailer.

## MOUNTING, DISMOUNTING AND PARKING OF TRAILER/CRANE COMBINATION



**Please ensure the following before mounting a trailer to a tractor**

- the trailer/crane combination must be in perfect condition
- the maintenance and checking measures must be carried out according to the maintenance instructions.

According to the instruction manual of the tractor, check whether the max. permissible load of the pulling device exceeds the permissible load of the trailer coupling ring (as per the trailer's technical data).

## MOUNTING A TRAILER/CRANE COMBINATION TO A TRACTOR

Please ensure that the pulling device has locked in the operating position before mounting the trailer to tractor.

1. Lift the outrigger to the driving position.
2. Connect the hydraulic hoses of the hydraulic steering to the tractor.
3. Connect the hydraulic hoses of the crane to the tractor; see chapter "Connection to hydraulic unit" for details.
4. Make sure the support legs are in the transport position.
5. If the trailer is equipped with a brake, connect the brake's connections and hoses to the tractor. Before driving with the machine, ensure correct functioning of the brake.
6. Remove all locking elements placed in front of / behind the tires. Please ensure that the combination can be freely driven before starting the machine.

## DISMOUNTING A TRAILER/CRANE COMBINATION FROM A TRACTOR

Please ensure that the ground is level and stable before dismounting and parking the trailer.

1. Put locking elements front of/behind the trailer's tires in order to avoid trailer movement during parking.
2. Disconnect the crane hydraulic hoses from the tractor.
3. Disconnect the brake connections and hoses from the tractor.
4. Disconnect the hydraulic steering hoses from the tractor.
5. Swivel the outrigger to the parking position and secure it.
6. Detach the trailer from the tractor.

## HYDRAULIC STEERING

The trailer is equipped with hydraulic steering. The hydraulic steering is composed of two double-acting hydraulic cylinders and the associated hydraulic hoses.

The hydraulic pressure required for the cylinders is generated by the tractor's hydraulic system. The tractor must have a double-acting multi-way valve for the hydraulic steering. The maximum operating pressure is 200 bars. Under no circumstances may the pressure exceed the maximum permissible value.

Always bleed the hydraulic system before using the hydraulic steering.

1. Attach the trailer to the tractor.
2. Remove all locking elements placed in front of/behind the tires.
3. Make sure there is nobody in the danger zone of the forest trailer/crane combination.
4. Connect the hoses of the hydraulic steering to the tractor.
5. Open the multi-way valve slightly and with caution to operate the hydraulic steering.
6. Slowly operate the steering from one limit stop to the other to bleed the cylinders completely.
7. Bleeding has been accomplished when smooth steering movements are obtained and the steering responds directly to the control of the multi-way valve.

# FARMI 100

## LUBRICATION INSTRUCTIONS

### LUBRICANT RECOMMENDATIONS

Before carrying out lubrication or maintenance work, switch off the main engine. Never clean, lubricate or maintain a machine that is in operation.

Ensure that lubrication and maintenance are carried out regularly by following the lubrication and maintenance schedules given in the lubrication diagram.

Check the machine daily to ensure timely discovery of wear and tear and any damage.

When carrying out maintenance work, use appropriate tools that are in good condition.

Keep flammable items away from open fire.

RECOMMENDED LUBRICANTS	
Brand	Type
BP	Energrease LS-EP2, L21M
EXXON	Beacon EP2, Multipurpose GR Moly
MOBIL	Mobilux EP2, Mobil Grease MP, Special
SHELL	Alvania EP Grease 2
UNION / TEXACO	Marfak Multi-purpose 2, Molytex Grease 2
TEBOIL	Universal CLS

## TROUBLESHOOTING TABLE

PROBLEM	CAUSED BY	MEASURES
BRAKE IS INEFFECTIVE	BRAKE HOSE IS LEAKING OR FAULTY	CHECK HOSES AND CONNECTIONS
	TOO LITTLE PRESSURE IS BEING FED TO THE BRAKES	CHECK PRESSURE
	BRAKE SHOES OR DRUMS ARE WORN	CHANGE BRAKE SHOES OR DRUMS
	BRAKE CYLINDER SEALS ARE FAULTY	REPLACE SEALS
	BRAKE CYLINDER IS FAULTY	REPLACE OR REPAIR BRAKE CYLINDER

# FARMI 100

## MAINTENANCE

OBJECT	ACTION		
	Maintenance interval, working hours		
	8 h, or after working shift	50 h, or after working week	After 250 working hours or once a year
<b>General</b>	Check cylinders and leakages in hoses	Check pins and lockings Check fastening bolts	Check the condition of primary structures
<b>Drawbar eye</b>		Lubricate axis of rotation of the drawbar eye Check torque of the mounting screws	
<b>Drawbar joint</b>	Lubricate slide bearings	Check torque of the journal	
<b>Hydraulic steering cylinder</b>	Lubricate swing bearings Check condition of piston rod and piston rod oil scraper Check condition of hoses and couplings	Check journals and locks	Check cylinder bearings
<b>Bearings of the floating bogie</b>	Lubricate slide bearings	Check journal lock for correct seat	Check condition of the slide bearings
<b>Load backrest, adjustable sets of bolsters, tandem bogie</b>		Check torque of bolts and nuts	
<b>Tires</b>		Check condition of tires, torque of mounting screws and tire pressure	
<b>Hubs</b>			Check condition of the hub bearings Lubricate bearings Check condition of the brake

### CHECKING TIRE PRESSURE

- Only use appropriate tools for checking and adjusting tire pressure.
- Do not exceed the recommended maximum pressure.
- Check tyre pressure.  
400/60-15,5 14 PR 3,6 bar max.

### REPLACING HYDRAULIC HOSES

- When changing hydraulic hoses, clean the new hoses, at least with compressed air.
- Check that the hoses are connected properly after the change.
- If any hoses are removed for long periods of time, protect the ports properly.
- Let the pump rotate slowly to bleed the air from the system after changing hoses or components.



# FARMI 100

---

## MAINTENANCE

- Maintenance work must be carried out regularly to ensure safe and trouble-free operation.
- Always use the appropriate tools.
- Determine the location of the defect.
- Keep the disassembled sections, removed parts, and the repair area protected from dirt.
- Clean the parts using kerosene, never fuel oil.

## LUBRICATION

Refill fresh grease until some old grease escapes. Wipe off excess grease.

## CHECK AND LUBRICATE HUBS

Remove the hub cap. Check the bearing case for ingress of water. If there are signs of water, rust or dirt, disassemble and carefully clean the hub. Replace bearings and seals if necessary.

When assembling the hub, apply grease to the sliding surfaces of the bearings. Then lubricate and relubricate as follows:

1. Open the bleed screw.
2. Grease the bearing through the nipples until some of the existing grease escapes through the bearings.
3. Do not use too much grease; otherwise, the hub can overheat during travel.
4. Afterwards, close the bleed screw and remount the hub cap.

On a hub equipped with a brake check the condition of the brake shoes. If the friction surface has worn down to less than 2 mm, replace the brake shoes. Clean the brake parts and the brake drum before assembly. Slightly lubricate the articulated joints.

## REPLACING BEARINGS

- When installing bearing sleeves, use an appropriate drift.
- Make sure that the new bearing's grease hole meets the nipple.
- If the bearings have grease pockets, fill these with Vaseline.

## PRESSURE MEASUREMENT

Always make the adjustments with the manometer in place.

- The main pressure is measured from the measuring point in the control valve's inlet section.
- Adjustments and inspections for each movement:
  - Set the main pressure relief valve to 5 bar above the value set for the protective valve.
  - Perform the movement, and check and adjust the pressure if necessary.
  - Finish by adjusting the main pressure to the set value.
- Pressure measurements are to be performed at the normal operating temperature and at the normal flow rate.
- The free flow pressure can be read from the manometer when the flow of oil is directed through the valve.

## REPAIR WELDING

If welding is required for modifying or repairing the crane, note the following:

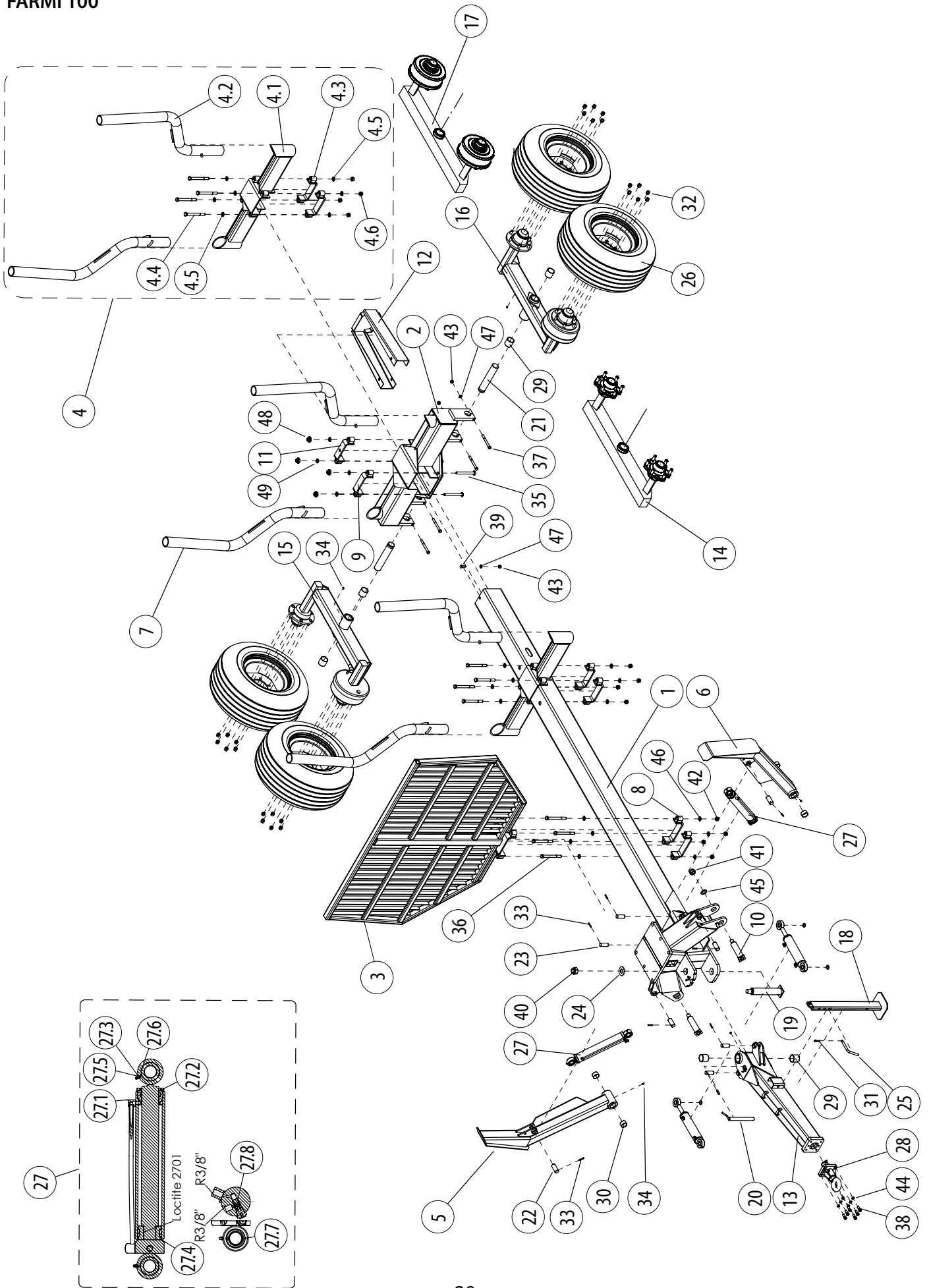
- The welder must be qualified: welding grade 3. There must be no root defects.
- Remove paint and any oil from the location to be welded.
- Connect the ground terminal directly to the piece to be welded – there must be no joints in between.
- Use OK 48.00 or equivalent electrodes. The electrodes must be dry.
- Improperly welded structures can get fractured.





# FARMI 100

FARMI 100



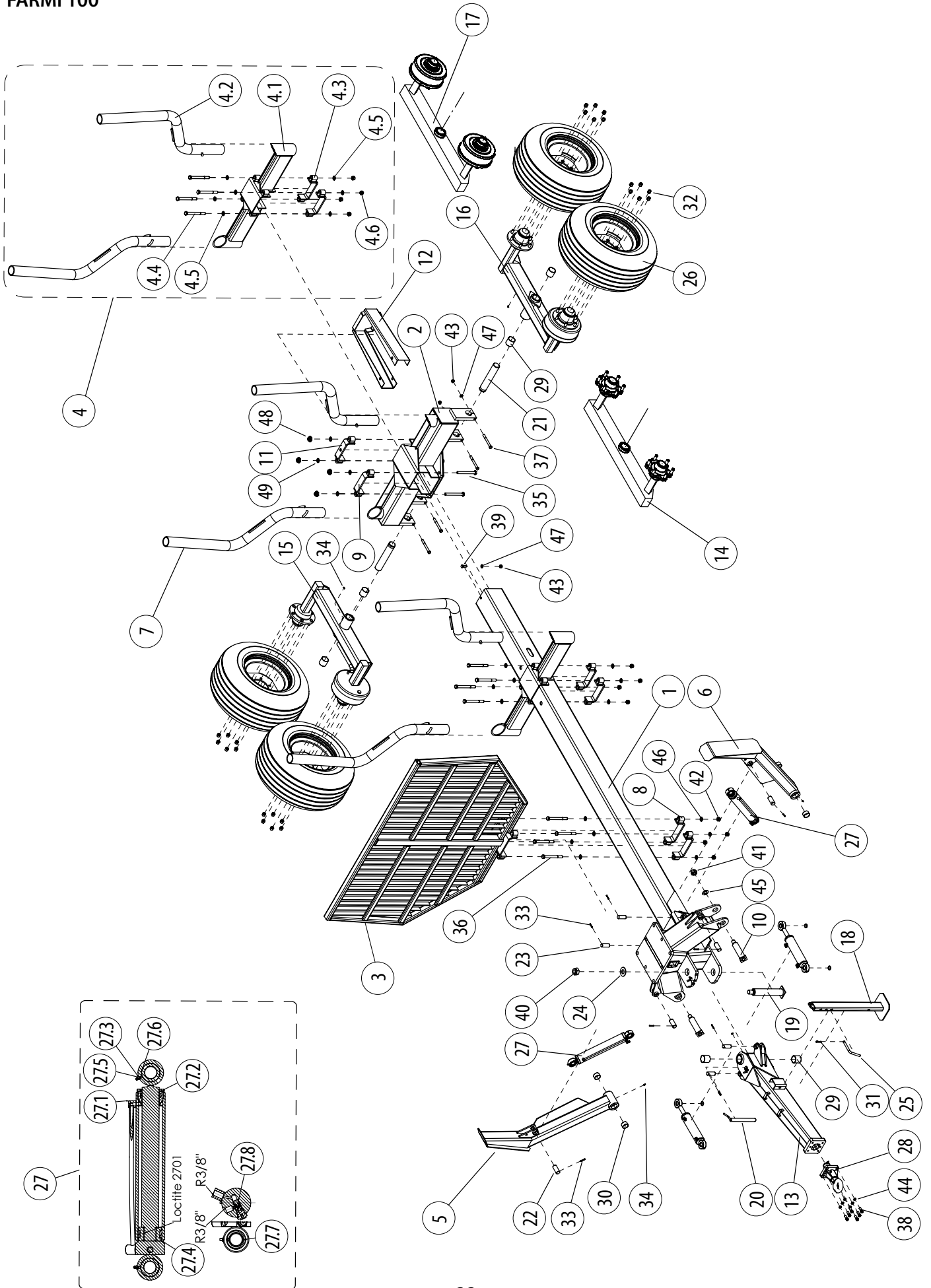
# FARMI 100

## FARMI 100

Part	Order no	Description	Remarks	Qty
1	44080370	Frame		1
2	44080360	Bolster bogie		1
3	34080380	Screen		1
4	44080350	Bolster	complete	2
4.1	44080350	Bolster		1
4.2	44080340	Stake		2
4.3	44082270	Fastener		2
4.4	52062338	Hexagonal screw	M20X200 DIN931 88ZN	4
4.5	52200630	Washer	M20 DIN6340 ZN	8
4.6	52117207	Lock nut	M20 DIN985 8ZN	4
5	44082120	Support leg	right	1
6	44082130	Support leg	left	1
7	44080340	Stake		2
8	44082250	Screen fastener		2
9	44082270	Bolster fastener		1
10	44082320	Support leg pin		2
11	44082300	Bolster bogie fastener		1
12	44082350	Cover	Bogie beam with brakes	1
13	44081300	Draw bar		1
14	44081210	Bogie beam, without brakes		2
15	44081450	Bogie with brakes	right	1
16	44081460	Bogie with brakes	left	1
17	44085320	Bogie beam, two hubs with brakes		2
18	44081530	Parking support		1
19	44081760	Draw bar pin		1
20	44082050	Draw bar locking pin		1
21	44082080	Bogie pin		2
22	44082090	Cylinder pin	D35	4
23	44082100	Cylinder pin	D30	4
24	44082110	Washer	D60	1
25	44082070	Parking support pin		1
26	03421510	Tyre	400/60-15,5 14PR offset-15	4
27	56096070	Support leg cylinder	70/50-360	2
27.1	56097240	Cylinder tube		1
27.2	56097250	Guide		1
27.3	56097260	Piston rod		1
27.4	56097270	Piston		1
27.5	52401015	Grease nipple		4
27.6	54591029	Articulation bearing		2
27.7	52231586	Circlip		2
27.8	56096120	Valve		1
27.9	52355030	Seal kit		1

# FARMI 100

FARMI 100



# FARMI 100

## FARMI 100

Part	Order no	Description	Remarks	Qty
28	04073530	Draw bar eye	turning	1
	54819200	Dræe bar eye	fixed	1
29	54563291	Slide bearing		6
30	54562442	Slide bearing	PM 5030 DX CLACIER	4
31	52842135	Cotter		1
32	58214537	Nut	M18x1,5 DIN74361A	24
33	52840220	Cotter pin		8
34	52401023	Grease nipple		5
35	52062440	Screw	M24X240 DIN931 10.9ZN	4
36	52062338	Screw	M20X200 DIN931 88ZN	4
37	52062601	Screw	M16X150 DIN931 88ZN	4
38	56094576	Screw	M16X50 DIN912 12.9	6
39	52063898	Screw	M16x35 DIN933 88ZN	1
40	52117314	Lock nut	M36 DIN985	1
41	52117306	Lock nut	M30 DIN985 8ZN	2
42	52117207	Lock nut	M20 DIN985 8ZN	4
43	52117165	Lock nut	M16 DIN985 8ZN	5
44	52211075	Spring washer	M16 DIN127 ZN	6
45	52200110	Washer	M30 DIN126 58ZN	2
46	52200630	Washer	M20 DIN6340 ZN	8
47	52200078	Washer	M16 DIN125 58ZN	5
48	52117249	Lock nut	M24 DIN985 8ZN	4
49	52200660	Washer	M24 DIN6340 ZN	4

# FARMI 100

## 04081250 HOSE ASSY, TWO HUBS WITH BRAKES

Part	Order no	Description	Remarks	Qty
1	04081260	FARMI 100JJ Hose assy		1
1.1	56516511	Hose assy	S1/4S L=6,2	2
1.2	52432226	Double fitting	R1/4-1/2	1
1.3	52390382	Cu ring	21X28X1,5	1
1.4	52449022	Quick fitting	1/2" SK	1
1.5	54922141	Plug	1/2"	1
1.6	56517212	Hose assy	V1/4"S L=1,6 m	2
1.7	56516081	Hose assy	S1/4"S L=0,65 m	2
1.8	56516115	Hose assy	S1/4"S L=0,8 m	2
2	52443660	T- nipple	R1/4	3
3	52442761	Angle nipple	R1/4 04510-04 90ast	4
4	52434024	Double fitting	R1/4-M10X1	4
5	52390671	Cu ring	10X14X1,0	4

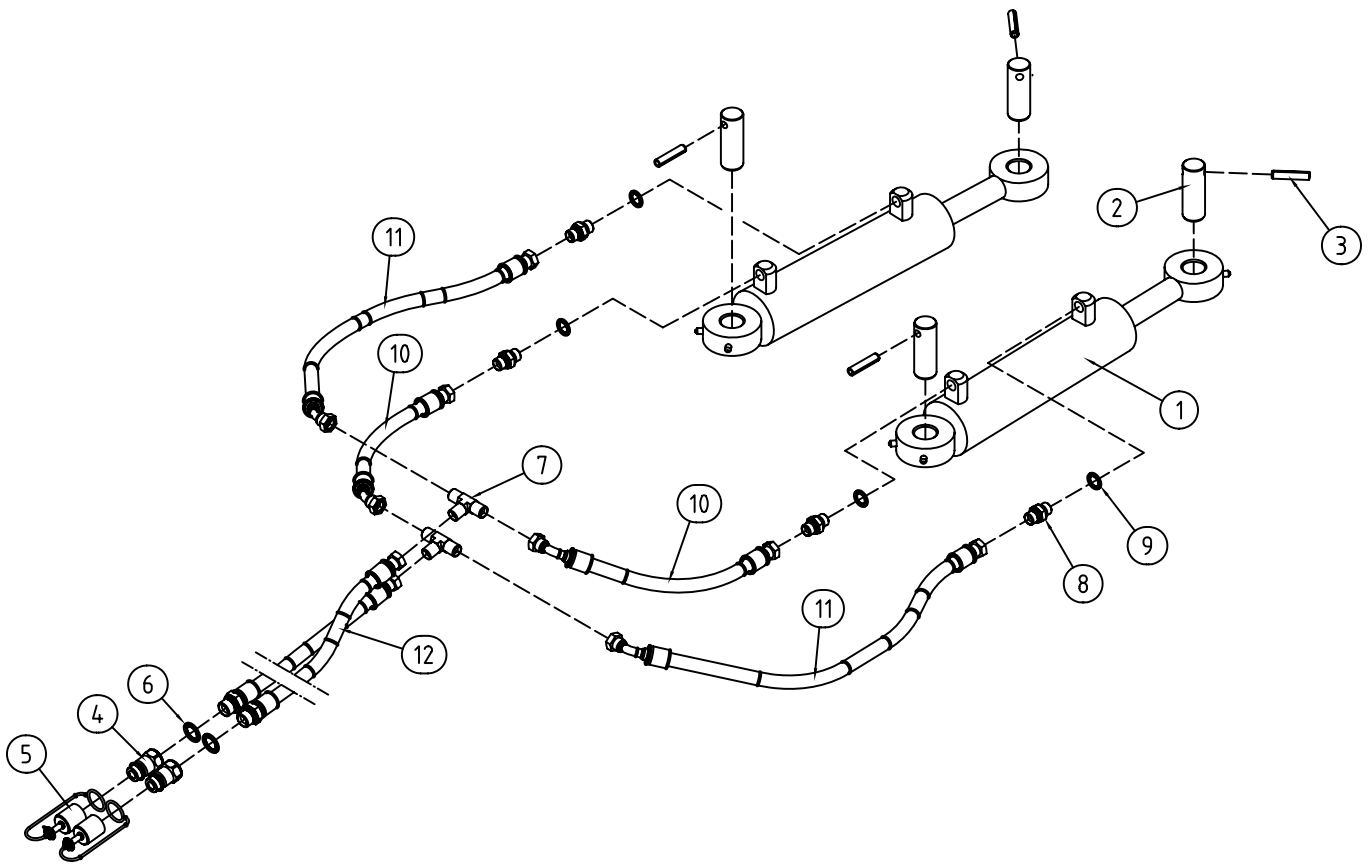
## 04081230 HOSE ASSY, ONE HUB WITH BRAKES

Part	Order no	Description	Remarks	Qty
1	04081240	FARMI 100J Hose assy		1
1.1	56516511	Hose assy	S1/4 S L=6,2	2
1.2	52432226	Double fitting	R1/4-1/2	1
1.3	52390382	Cu ring	21X28X1,5	1
1.4	52449022	Quick fitting	1/2" SK	1
1.5	54922141	Plug	1/2"	1
1.6	56517261	Hose assy	V1/4"S L=2,1 m	2
2	52443660	T- nipple	R1/4	1
3	52442761	Angle nipple	R1/4 04510-04 90ast	2
4	52434024	Double fitting	R1/4-M10X1	2
5	52390671	Cu ring	10X14X1,0	2



# FARMI 100

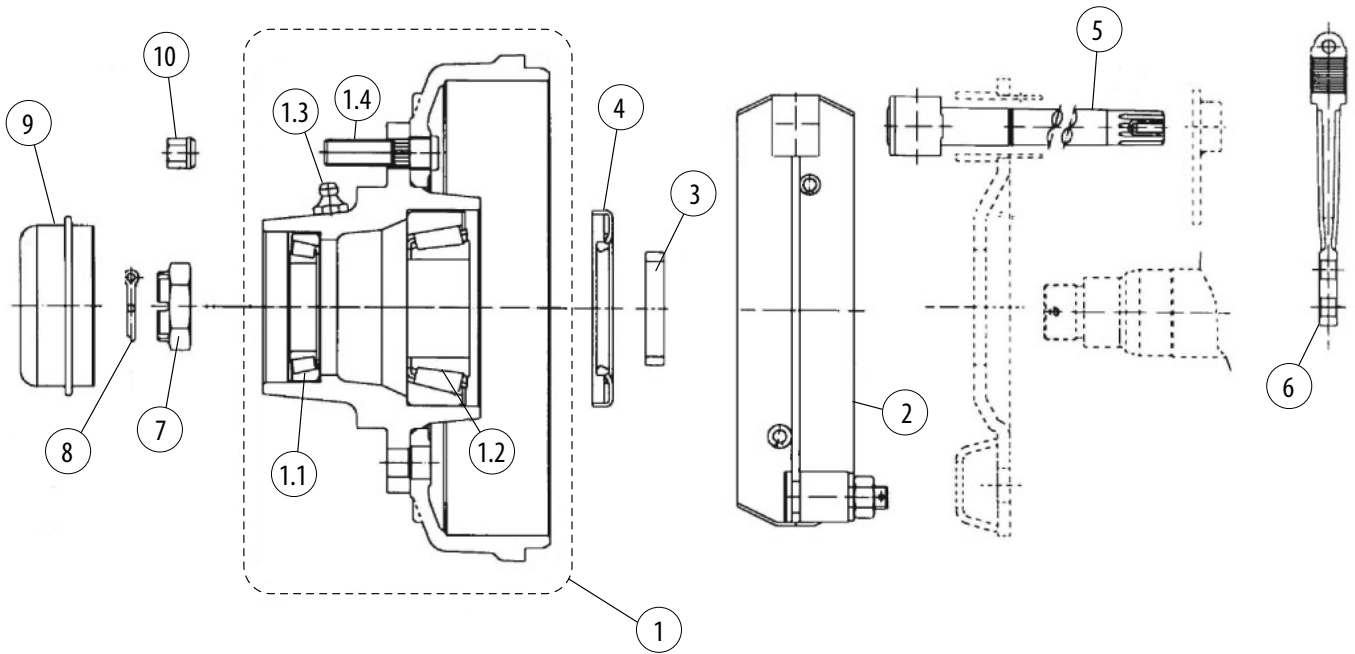
## 24083280 HYDRAULIC STEERING



Part	Order no	Description	Remarks	Qty
1	58220400	Hydraulic cylinder		2
2	44082100	Pin		4
3	52840337	Cotter pin	10X50 DIN1481	4
4	52449022	Quick fitting	1/2" SK	2
5	54922141	Plug	1/2"	2
6	52390200	Usit-ring	U21,54X28,58X2,49	2
7	52443678	T- nipple	R3/8 702-6	2
8	52432028	Double fitting	R3/8	4
9	52390556	Usit-ring	U17,28X23,8X2,03	4
10	56521024	Hose assy	V3/8"S L=0,35 m	2
11	44083290	Hose assy	V3/8"S L=0,62 m	2
12	44083300	Hose assy	S3/8"S - UK R1/2" L=2,3 m	2

# FARMI 100

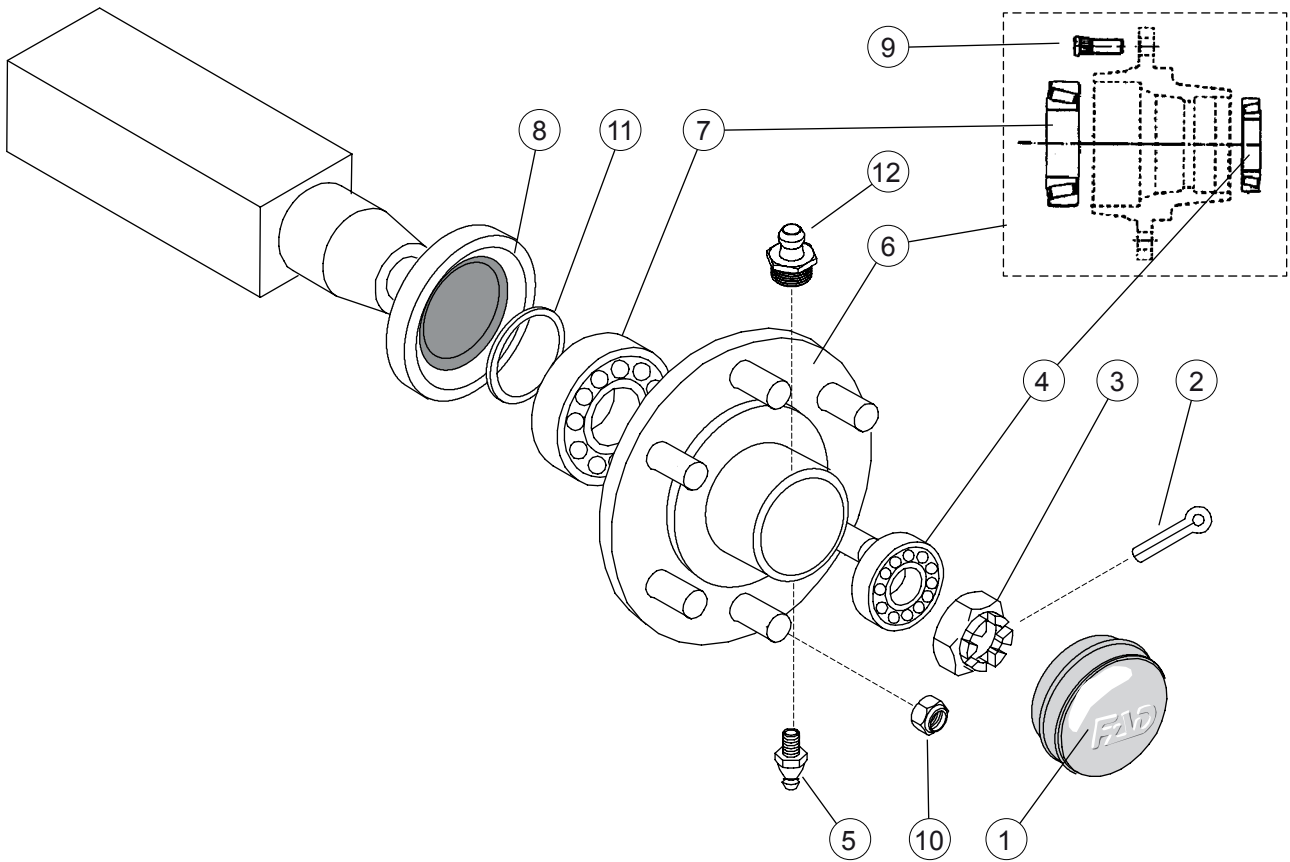
## 54839850 6-BOLTS HUB WITH BRAKES



Part	Order no	Description	Remarks	Qty
1	54839851	Brake drum	complete	1
1.1	54839852	Outer bearing		1
1.2	54839853	Inner bearing		1
1.3	54839854	Grease nipple		1
1.4	58214594	Bolt	M18X1,5X62	6
2	54839855	Brake shoe		2
3	58220542	Retaining ring		1
4	58221730	Seal	120X80X12	1
5	58214529	Brake axle		1
6	54843362	Brake lever		1
7	58220526	Castle nut		1
8	58220559	Split pin		1
9	58220534	Dust cover		1
10	58214537	Nut	M18x1,5 DIN74361A	6

# FARMI 100

## 54839717 6-BOLTS HUB WITHOUT BRAKES



Part	Order no	Description	Remarks	Qty
1	58220534	Dust cover		1
2	52813235	Split pin	6X50 DIN94 ZN	1
3	58220526	Castle nut		1
4	58220492	Bearing		1
5	58220658	Grease nipple		1
6	-	Hub		1
7	58220500	Bearing		1
8	58221730	Seal		1
9	58214584	Bolt	M18X1,5X49	6
10	58214537	Nut	M18X1,5	6
11	58220542	Retaining ring		1
12	58220666	Grease valve		1



---

## WARRANTY

Farmi Forest Oy grants a 12-month warranty on all of its products, covering material and manufacturing faults. The warranty comes into effect on the product's delivery date.

The manufacturer is not liable for damages caused by:

- misuse of the product
- alterations or repairs made without the manufacturer's permission
- insufficient maintenance
- non-original parts

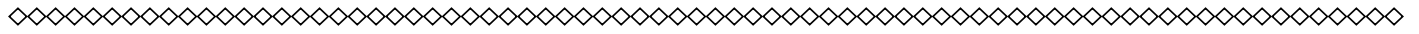
The warranty does not cover wearing parts.

Send faulty parts, carriage paid, to the manufacturer for inspection. Repairs will be conducted by Farmi Forest Oy or an authorized expert. The warranty is valid only if the bottom part of this page is filled in and returned to the manufacturer within 14 days of receipt of the product.

By returning the warranty certificate, you confirm that you have read and understood the instruction manual that came with the product.



Farmi Forest Corporation  
Ahmolantie 6  
FIN-74510 IISALMI  
FINLAND



## PRODUCT REGISTRATION FORM

Date of delivery: \_\_\_\_/\_\_\_\_ 20\_\_\_\_

Dealer:

Dealer's address:

Dealer's tel:

Product and type:

Serial number:



Return to the manufacturer

Date of delivery: \_\_\_\_/\_\_\_\_ 20\_\_\_\_

Dealer:

Dealer's address:

Dealer's tel:

Customer:

Customer's address:

Customer's tel:

E-mail:

Product and type:

Serial number:







Farmi Forest Corporation  
Ahmolantie 6  
FIN-74510 Iisalmi, Finland  
Puh. +358 (0)17 83 241  
Fax. +358 (0)17 8324 372  
[www.farmiforest.fi](http://www.farmiforest.fi)